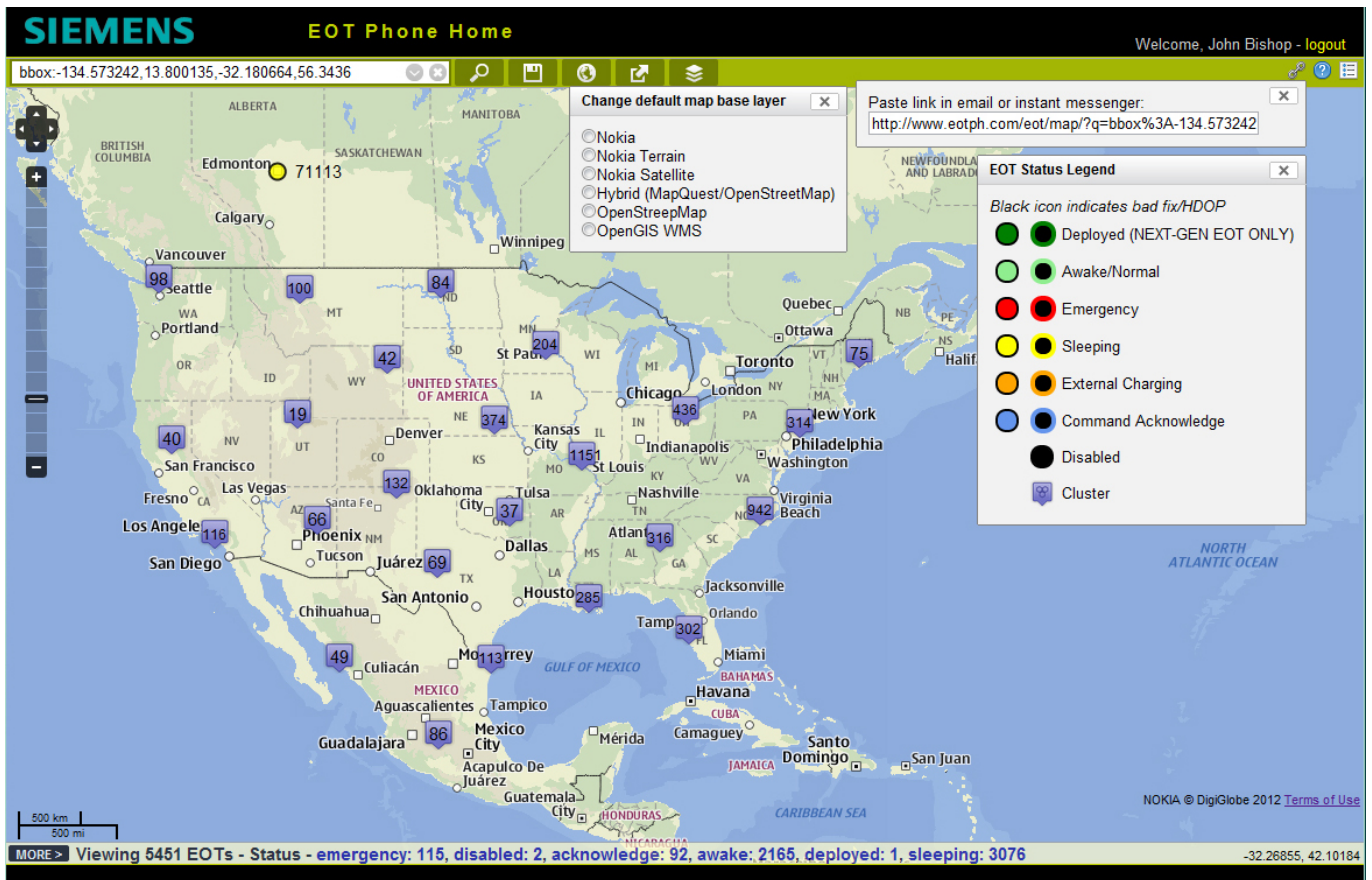


## Rail Automation

# End of Train Phone Home

The Siemens Rail Automation End of Train Phone Home solution is a subscription based Telemetry Management Software as a Service (SaaS) application that is architected to support multiple manufacturers and empowers railroad operations personnel to efficiently deploy, monitor, track, maintain and manage End of Train (EOT) devices ubiquitously with the ease of a browser based interface.

Most knowledge users are familiar with Web Browsers and as such, the Siemens Rail Automation EOT Phone Home solution is validated to support the latest versions of Microsoft Internet Explorer, Google Chrome, Mozilla Firefox and Apple Safari, which reduces training costs and provides IT departments a robust environment for managing version control and security policies.



With decades of combined experience in the rail industry, the Siemens Rail Automation Software Solutions team designed the EOT Phone Home application from the perspective of operations personnel who are responsible for managing EOT devices. These insights lead to a set of truly revolutionary features that supports effective operations including:

- Color coded Key Performance Indicators (KPIs) for EOT status
- Clustering to efficiently manage map real-estate
- Paste link feature for proficient collaboration
- Multiple map base layers for visualizing mapping features
- Hyperlinked status bar for current quick scroll view of common EOT statuses
- Search options dialog box for effortless queries
- Saved searches feature for rapid retrieval of common queries
- Run History Report function with multiple file formats

**Intuitive user interface quickly enables even the most casual user to rapidly become proficient in accessing information relative to their interest**

The Siemens Rail Automation EOT Phone Home solution has an intuitive user interface that quickly enables even the most casual user to rapidly become proficient in accessing information relative to their interest. Advanced users will also appreciate the ability to perform their tasks with ease utilizing innovative capabilities such as:

- Locating missing EOT devices and providing mapped directions
- Tracing travel paths and tracking trains (as a backup to other systems)
- Configuration management of advanced settings
- Track and trace of device maintenance upgrades
- Disabling devices that are lost or misappropriated
- Billing for device utilization by other railroads
- Automated reporting for optimizing device utilization

The Siemens Rail Automation Software Solutions team supports the End of Train Phone Home solutions which are being promoted throughout North America for rail customers needing to manage their remote distributed EOT assets. Please contact your local Siemens Rail Automation representative for additional information including technical data sheets, demonstrations, presentations or pricing.

**Siemens Industry, Inc.**  
Rail Automation  
2400 Nelson Miller Parkway  
Louisville, KY 40223  
Tel: +1 800 793 7233  
[www.siemens.com/rail-automation](http://www.siemens.com/rail-automation)

© All Copy Rights Reserved to  
Siemens Industry, Inc., 2015  
Specification subject to change. 3/15